



# Get started with your Petzi™ Treat Cam™ in 3 easy steps

1

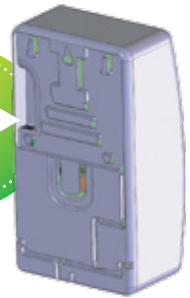
Download the Free Petzi app to your smartphone or tablet, and set-up your new Petzi account



2

Set-up your Petzi Treat Cam

- Plug one end of the power cord into the back of the Petzi Treat Cam.
- Plug the other end into a power outlet.
- Watch for a slow, pulsing red light on the camera.
- Start the Petzi App on your smart device.
  - From the menu, select **Petzi Treat Cam**
  - Click **New** (upper right) to add your Petzi Treat Cam
  - Follow the steps on your smart device

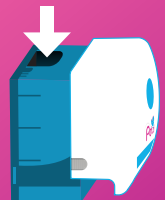


3

Load your pet's favorite treats into the Petzi Treat Cam

- Gently remove the white plastic cover from the Petzi Treat Cam by pressing the ridged buttons on either side
- Load crunchy treats less than 1" in size into the top fill hole
- Replace the white plastic cover by pressing it to the front of the Petzi Treat Cam until you hear a click

MAX TREAT SIZE





## Try it out!

- Open the Petzi App on your smart device.
- Connect to your Petzi Treat Cam.
- Simply tap the buttons to **see**, **speak**, **snap**, and **treat**!

### see

Watch the excitement on your pet's face when you **pop in**.



### snap

Capture candid images of your pet, to save or **share** with others.

### speak

Say **hello** to your pet through the high-quality speaker.

### treat

Dispense your pet's favorite treat with the Petzi Treat Launcher™ to show how much **you care**.



## Questions?

We're here to help

You'll find useful how-to's, frequently asked questions, and other helpful information at our website:

[petzi.com/support](https://petzi.com/support)

Or contact us at:

[support@petzi.com](mailto:support@petzi.com) • 855.738.9452

[warrantyandprivacylink.com](https://warrantyandprivacylink.com)